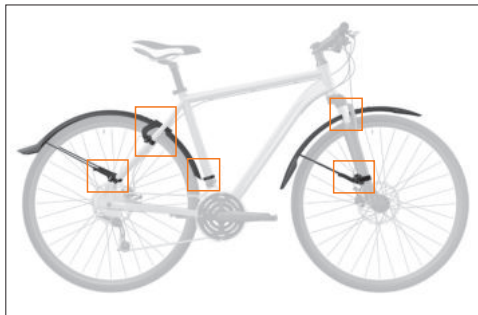
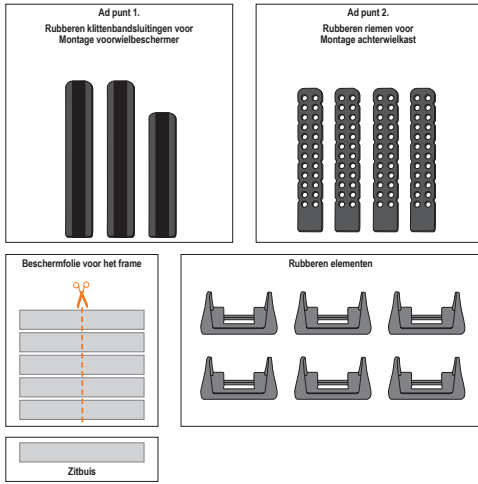
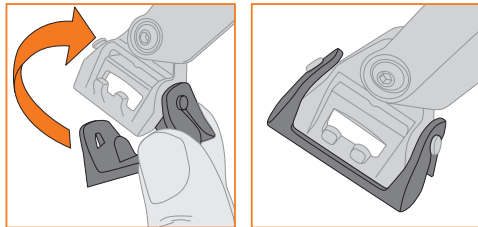


Onderdelen

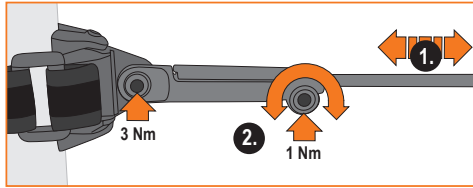
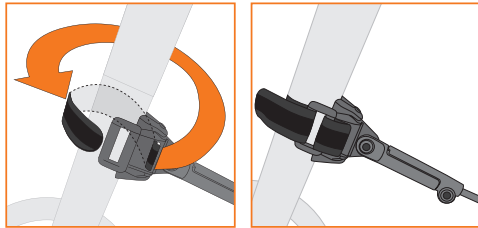


1. Spatbordmontage voor

1.1 Voorbereiding: montage rubberen elementen



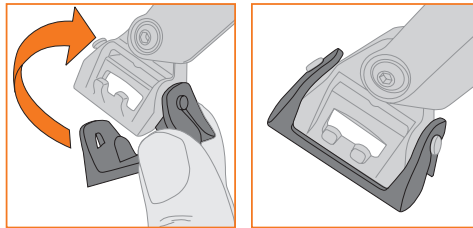
1.2



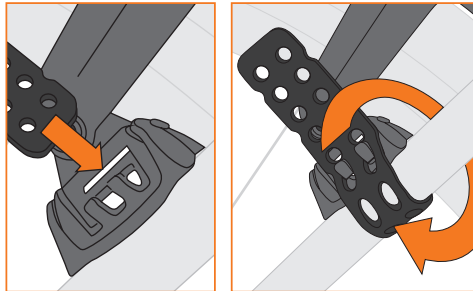
2. Spatbordmontage achter



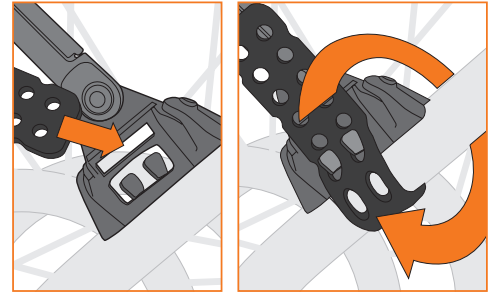
2.1 Voorbereiding: montage rubberen elementen



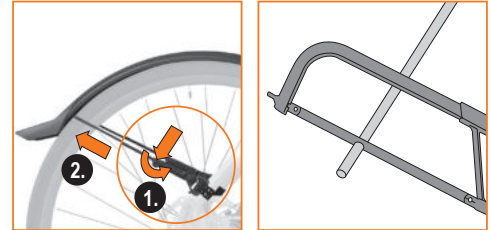
2.2



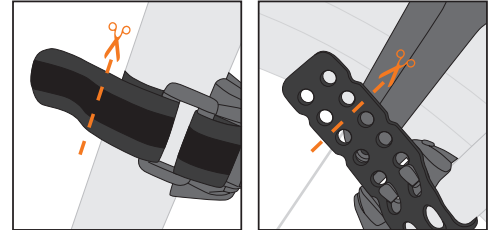
2.3



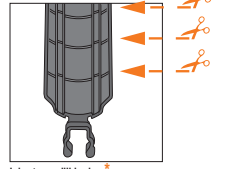
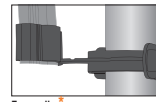
3. Indien nodig stangen inkorten



Optional



* Alleen mogelijk bij VELO 65 modellen



OPGELET!
15 mm minimum afstand tussen profiel en band aanhouden.

