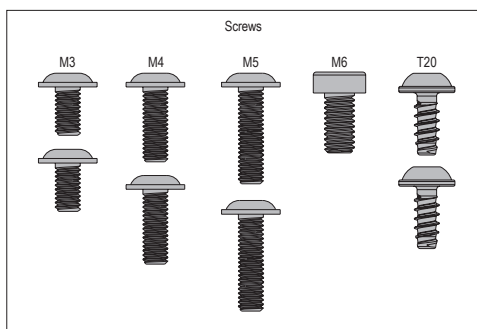
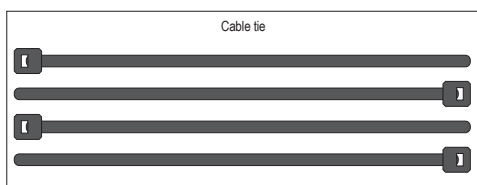
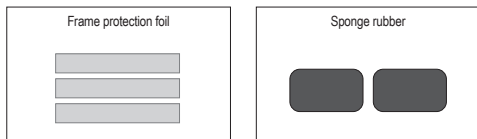
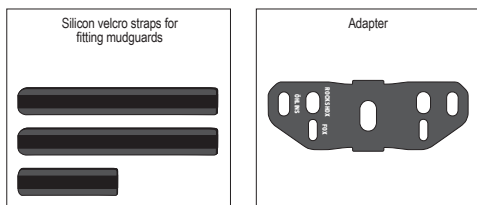


PARTS

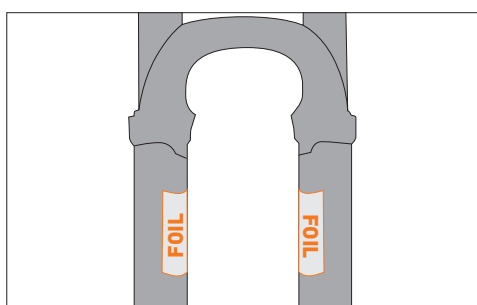


M3	M4	M5	M6	T20
FOX	ÖHLINS	ROCKSHOX	ROCKSHOX SUNTOUR	ADAPTER PLATTE/PLATE

MOUNTING PREPARATION



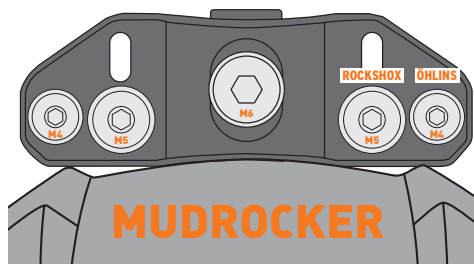
Adhere the sponge rubber to the mudguard (outer part)



Apply the protective frame film to the down tube.

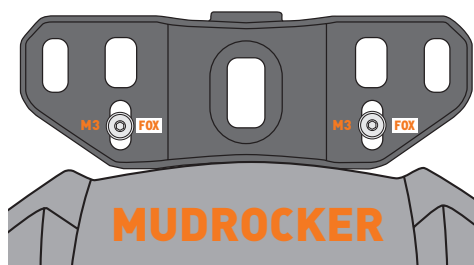
1.FASTENING POSSIBILITY

by means of an adapter

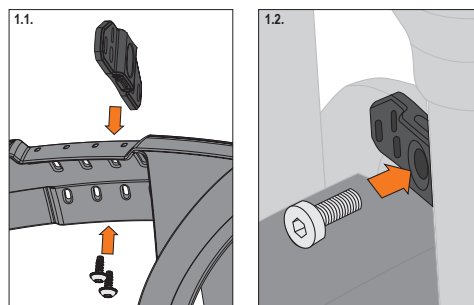


Alignment for Rockshox, Öhlins or others.

For mounting Öhlins 2x M4 on the side.
For mounting Rockshox 2x M5 on the side or 1x M6 in the middle.
For the mounting of other threaded parts 1x M6 in the middle.



Alignment for Fox.



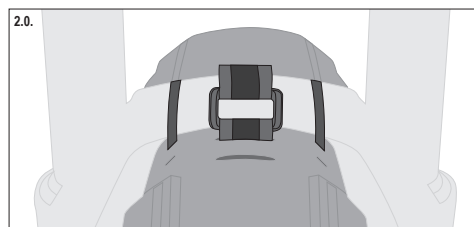
1.1. Screw the adapter onto the mudguard in keeping with the required hole pattern. Use the enclosed self-tapping screws for this. (TX20)

1.2. Screw the adapter onto the fork bridge.

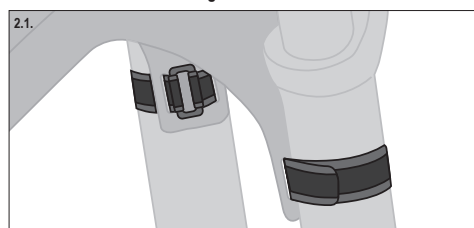
2.FASTENING POSSIBILITY

by means of a hook and loop fasteners or cable binders

Mounting on fork bridges without holes or for a fast removal. Insert a cable binder or a short hook and loop fastener through the holes in the mudguard.



Mounting on the down tube



2.1. Thread a long strap through and pull it tight.