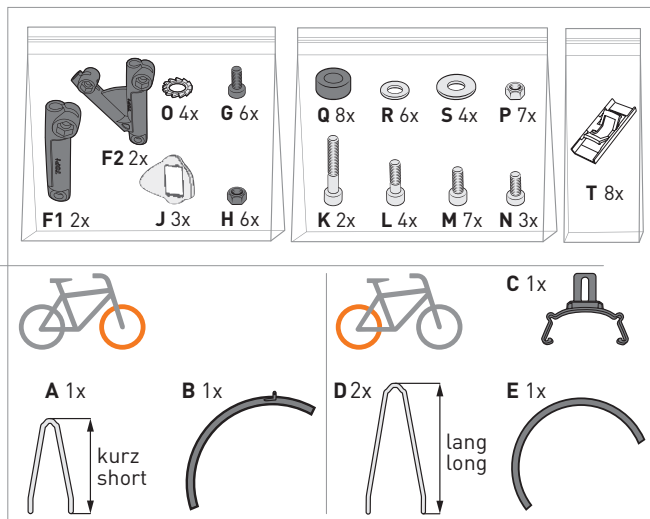
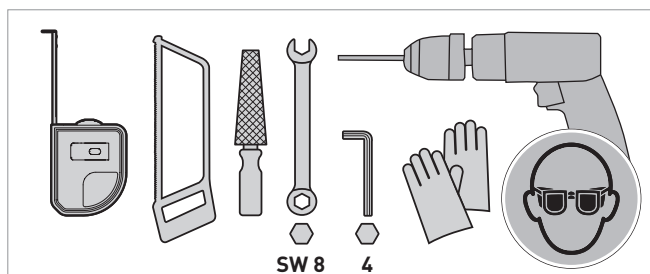


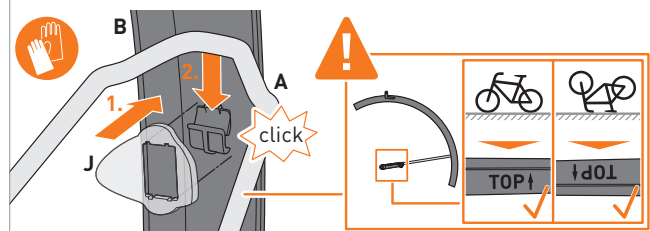
## EN . Scope of delivery



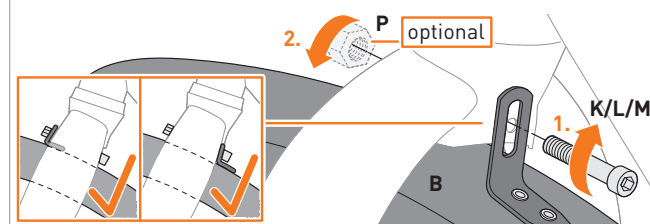
## EN . Tools



- 03 EN** Place the damping rubbers (J) on the clip in the wheel guard (B) and audibly engage the strut (A).  
**Please note.** The marking (TOP↑) of the ESC adapter must point towards the handlebar.

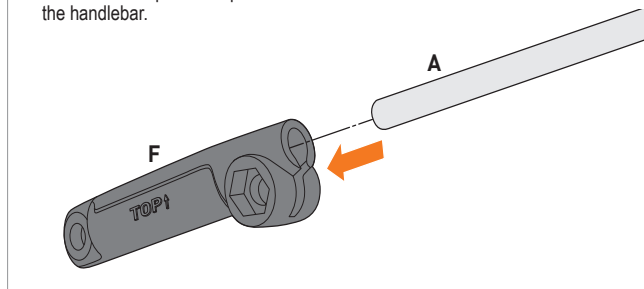


- 04 EN** Screw the bracket of the wheel guard (B) hand-tight to the bicycle fork with the screw (K/L/M). Optionally, use nut (P).

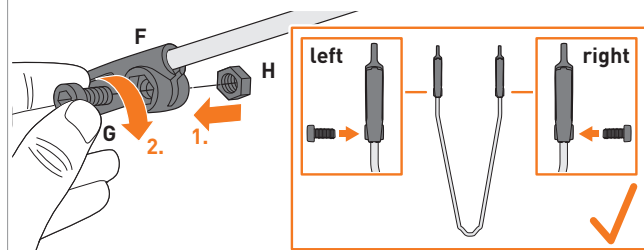


## EN . Front wheel mounting

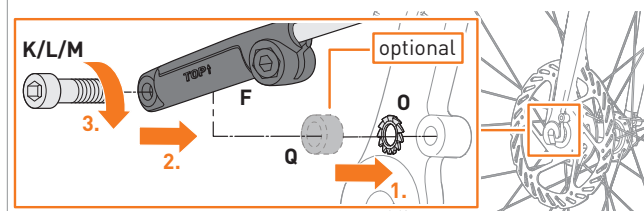
- 01 EN** Insert the short strut (A) into the ESC adapter (F).  
**Please note.** The marking (TOP↑) of the ESC adapter must point towards the handlebar.



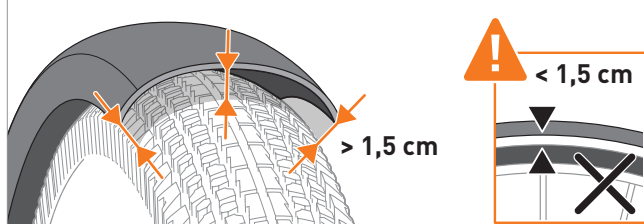
- 02 EN** Screw on the ESC adapter (F) hand-tight with screw (G) and nut (H).  
**Please note.** On both sides, the screws must be inserted into the ESC adapters from the outside.

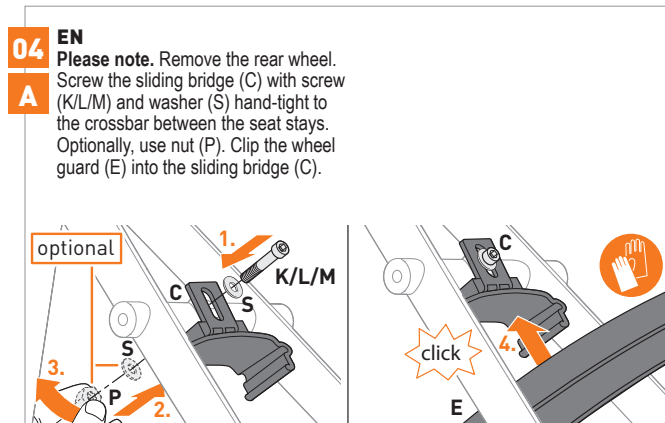
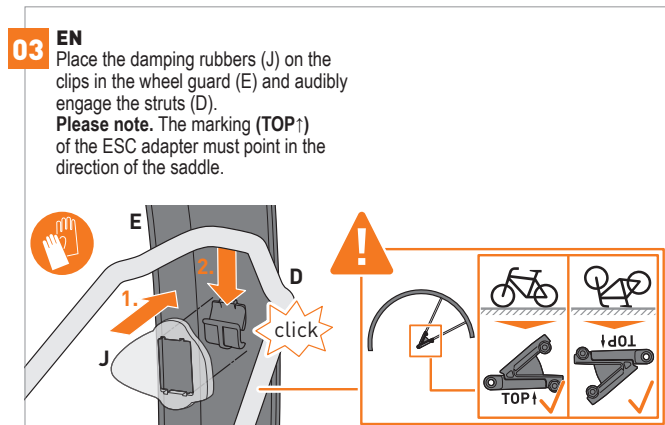
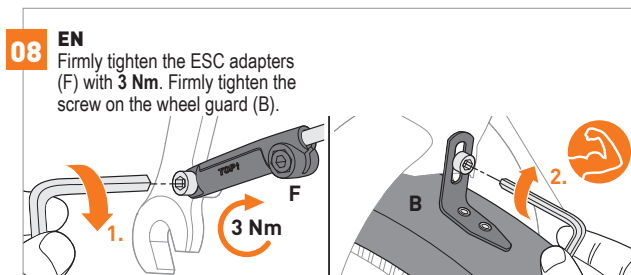
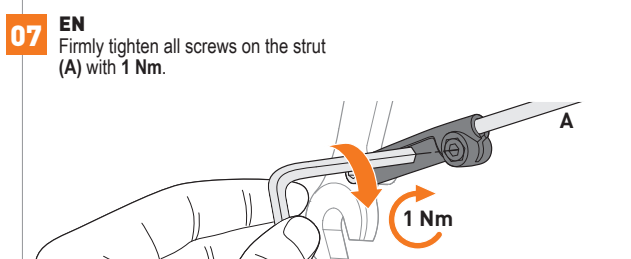
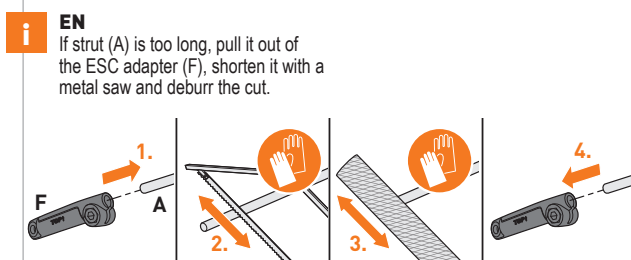


- 05 EN** Screw the ESC adapter (F) hand-tight to the fork with the screw (K/L/M) and the serrated lock washer (O). Optionally, use spacer (Q).  
**Please note.** In the case of forks with a bore in the direction of travel, an accessory kit is required.

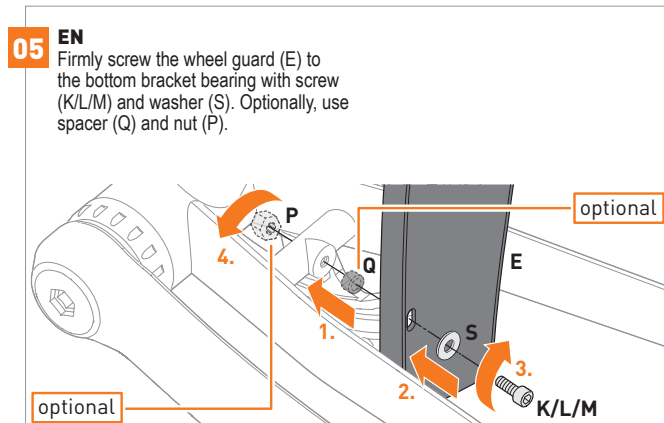
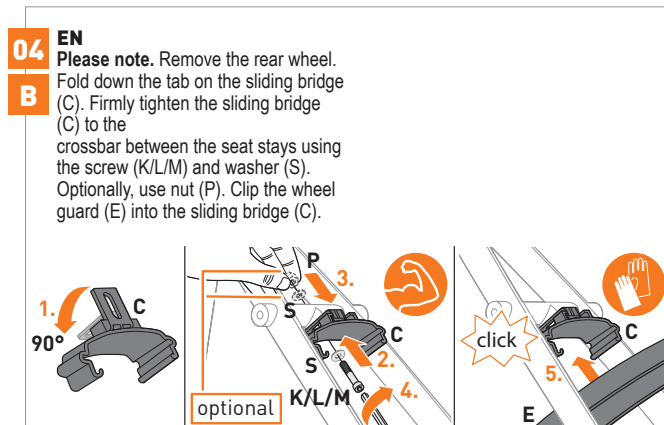
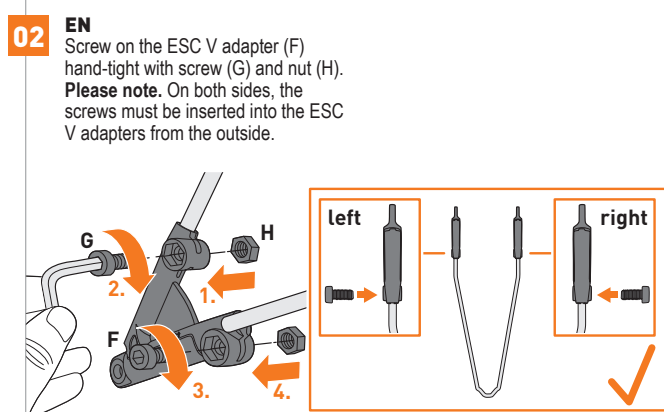
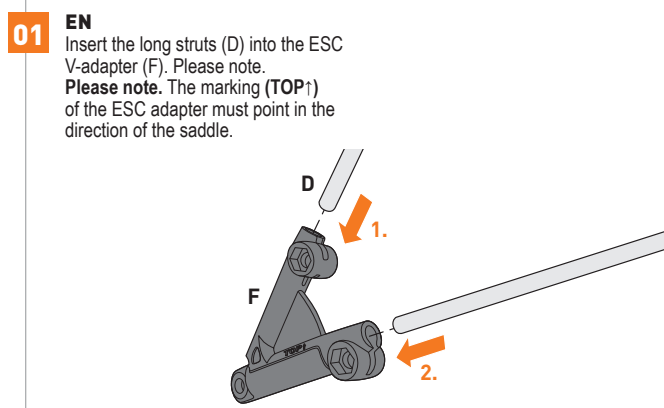


- 06 EN** Adjust the distance between the wheel guard and the tyre to approx. 1.5 cm.

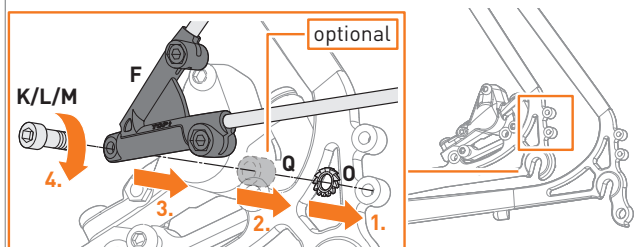




## EN . Rear wheel mounting



- 06 EN**  
Screw the ESC V adapter (F) to the end tips of the bicycle frame hand-tight using screw (K/L/M) and serrated lock washer (O). Optionally, use spacer (Q).

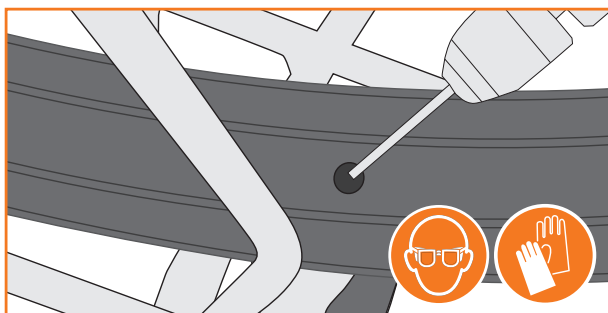


- 07 EN**  
Turn the bike upside down.



- 08 EN**  
Drill a hole in the correct location for the light/power cable.

**!** Risk of injury, wear protective clothing.

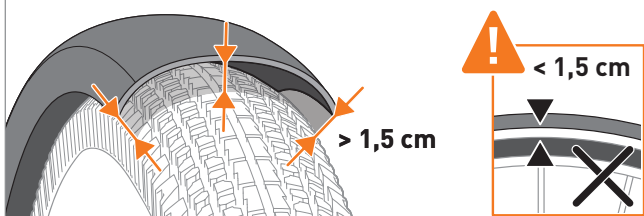


**EN**  
Route the light/power cable between the cable tunnel guides and through the drilled hole.

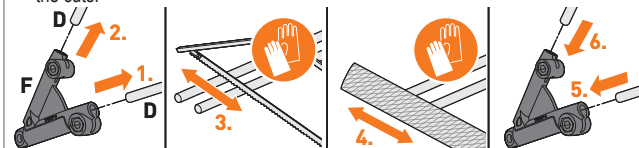
- 09 EN**  
Secure the light/power cable with sufficient cable clips (T). Make sure that the cable can't come into contact with the tyre.  
**Risk of accident!** Connect the light/power cable.



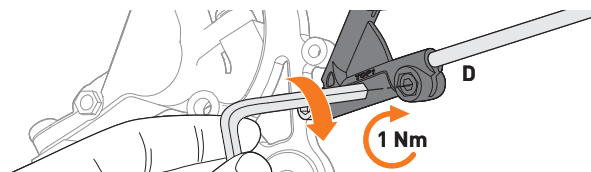
- 07 EN**  
**Please note.** Install the rear wheel. Adjust the distance between the wheel guard and the tyre to approx. 1.5 cm.



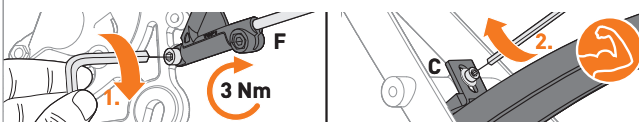
- i EN**  
If struts (D) are too long, pull them out of the ESC V adapter (F), shorten them with a metal saw and deburr the cuts.



- 08 EN**  
Firmly tighten all screws on the struts (D) with 1 Nm.



- 09 EN**  
Firmly tighten the ESC V adapters (F) with 3 Nm. In case of mounting variant A of the sliding bridge (C), firmly tighten the screw.



## EN . Safety instructions

Carefully read the entire safety instructions and follow the instructions.

### Warning levels.

Take note of and adhere to the warnings. Non-compliance can lead to injuries or damage to property!



**Caution!** Indicates hazards that can lead to injuries or damage to property.

### Safety instructions.

Injury hazard. The product contains small parts that could be swallowed. Keep the product or individual components away from children. Always mount SKS-BLUEMELS wheel guards using the mounting material supplied.

Injury hazard. Make sure there is sufficient foot space between the wheel guard and the pedal.

When mounted correctly, the ESC safety system guarantees the free movement of the wheels. During assembly, it is of the utmost importance to make sure that the ESC adapters are properly aligned. Incorrect alignment may prevent the ESC safety system from being triggered.

After the ESC safety system has been triggered or the ESC adapters have been damaged, replace the entire product.

Regularly check and retighten all screw connections.

### Intended use.

Use only for the intended use as a wheel guard. Any other use and/or structural alteration is considered to be not in accordance with the intended use and results in the expiry of the legal and contractual warranty for material defects and product liability.

### Disposal.



Dispose of packaging material in accordance with the applicable national and regional regulations. When disposing of the product, follow the national and regional disposal regulations.