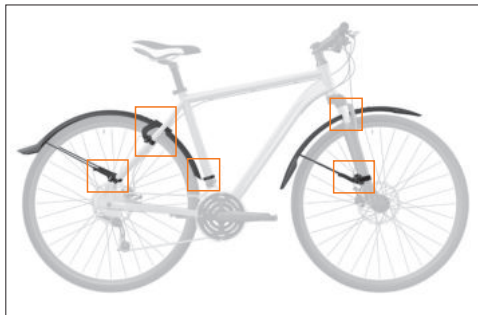
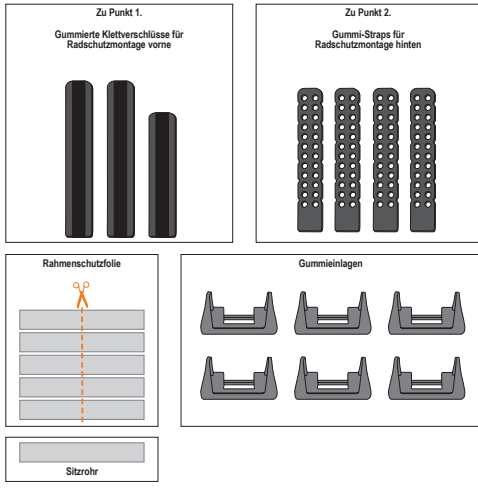
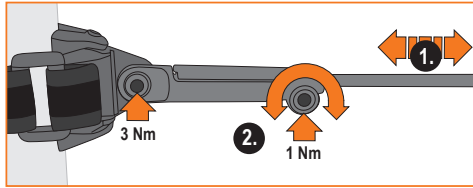
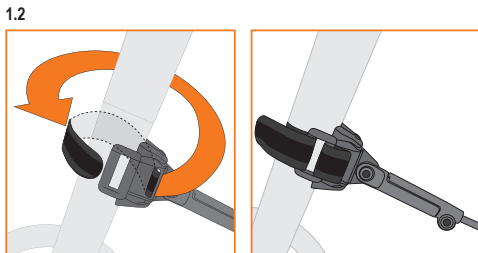
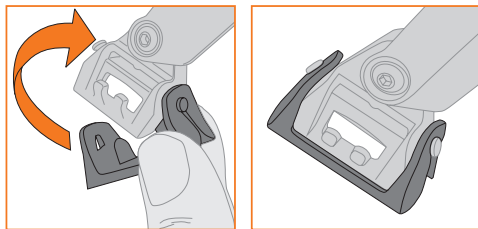


Teile



1. Radschutzmontage vorne

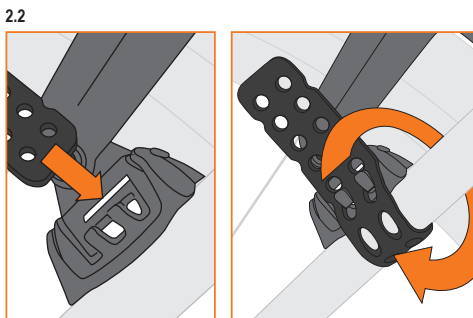
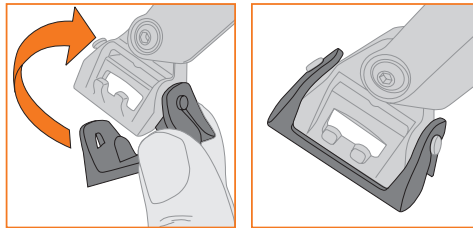
1.1 Vorbereitung: Montage Gummieinlagen



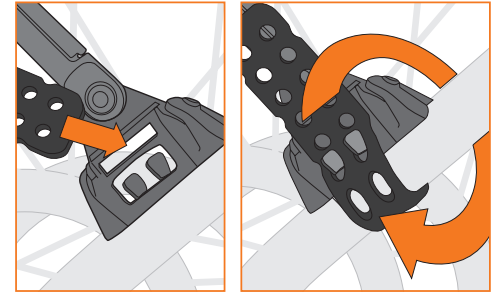
2. Radschutzmontage hinten



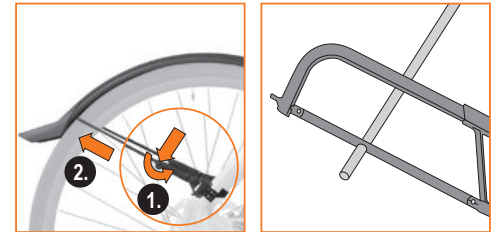
2.1 Vorbereitung: Montage Gummieinlagen



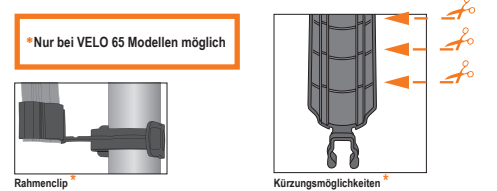
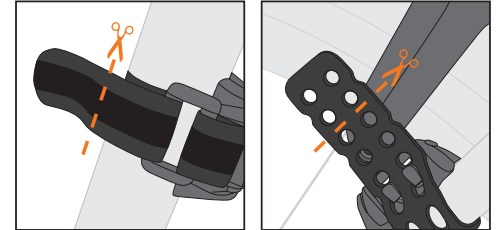
2.3



3. Ggf. Streben kürzen



Optional



Rahmencлип\*

Kürzungsmöglichkeiten\*

**ACHTUNG!**  
15 mm Mindestabstand zwischen Profil und Reifen einhalten.

