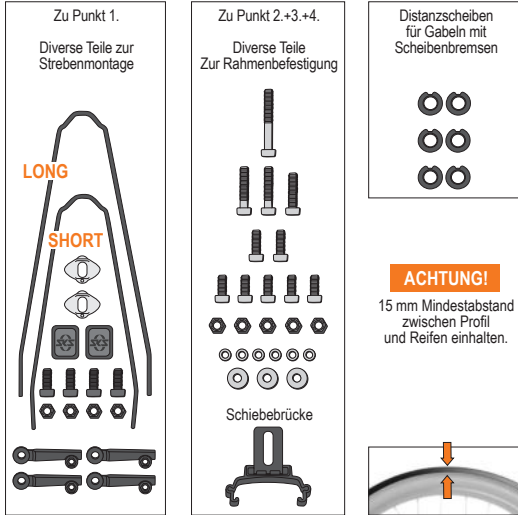
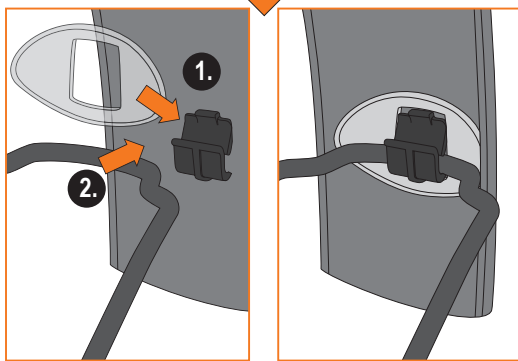
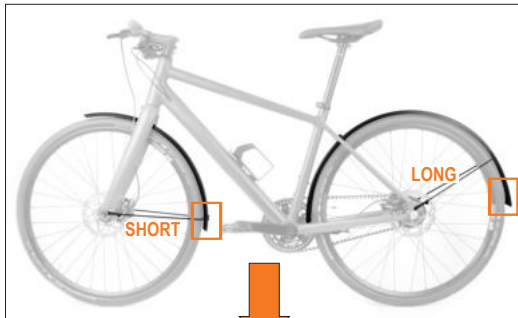
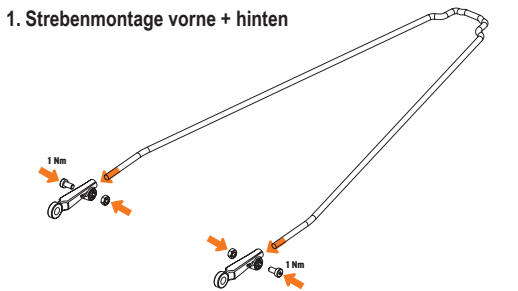


Teile

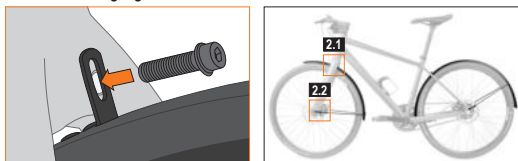


1. Strebenmontage vorne + hinten

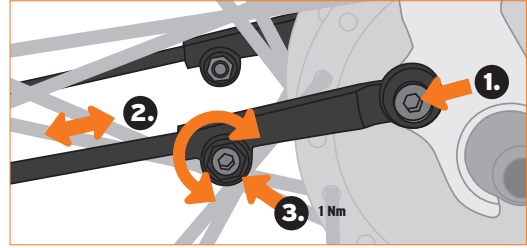


2. Rahmenbefestigung vorne

2.1 Winkelbefestigung vorne



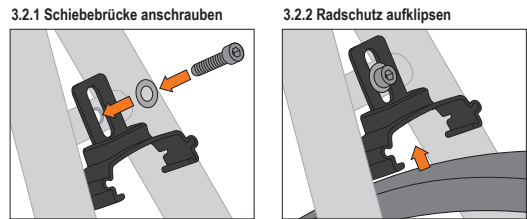
2.2 Strebenbefestigung vorne inkl. Längeneinstellung der Streben.



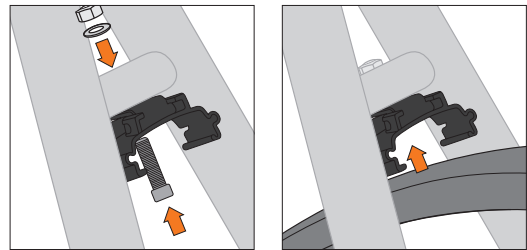
3. Rahmenbefestigung hinten

3.1 Hinterrad demontieren

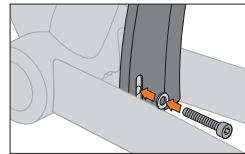
3.2 Befestigung der schiebebrücke bei 90° Winkel



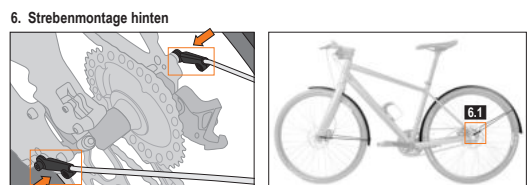
3.3 Befestigung der Schiebebrücke bei 0° Winkel



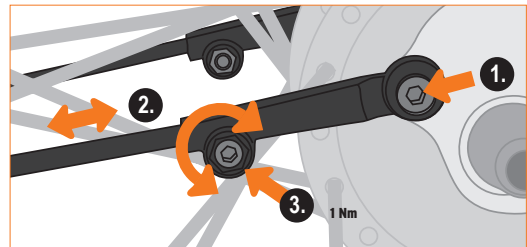
4. Tretlagermontage



5. Hinterrad wieder montieren



6.1 Strebenbefestigung hinten inkl. Längeneinstellung der Streben



ACHTUNG! Distanzscheibenmontage für Rahmen mit Scheibenbremsen

